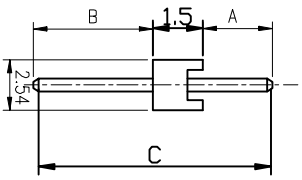
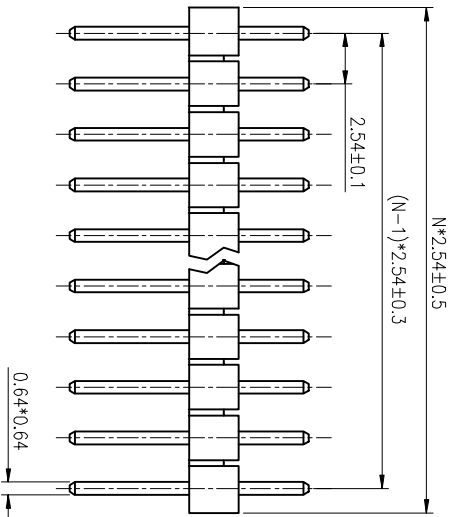


REV.	DESCRIPTION	DRAWN	CHECKED	APPROVED
A	NEW RELEASE	ZQJ 11/18//2014	~	ZQJ 11/18//2014
B	ADD P/N 0003	CJJ 11/18//2014	~	

SINGLE ROW
 N:NUMBER OF CONTACTS
 A/B:CUSTOMER LENGTH AVAILABLE



- NOTES:
- ELECTRICAL CHARACTERISTICS:
 - CONTACT RESISTANCE: 20mΩ Max.
 - DIELECTRIC WITHSTANDING VOLTAGE: 500V AC(rms) FOR 1 MINUTE.
 - INSULATION RESISTANCE: 1000MΩ Min.
 - ENVIRONMENT CHARACTERISTICS:
 - TEMPERATURE: -40°C~+105°C.

ITEM	PART NAME	PART NO.	MATERIALS	FINISHED	DRAWING NO.	SCALE	CUSTOMER	SHEET	1 OF 1
2	CONTACT		COPPER ALLOY	GOLD OR TIN PLATED					
1	HOUSING		THERMOPLASTIC	UL 94 V-0					
1	PART NAME								

GENERAL TOLERANCE		ANGLE TOLERANCE	
X	±0.60	X	±5°
X	±0.38	X	±3°
.XX	±0.25	.XX	±2°

PROJECTION	UNITS	TITLE
⊕	mm	2.54mm 1x40Pin Header S/T Type
□	A4	≠1.5mm
SIZE	SERIES	LL1009-1C

慈溪蓝翎电子有限公司
 CIXI LANLING ELECTRONICS CO., LTD.