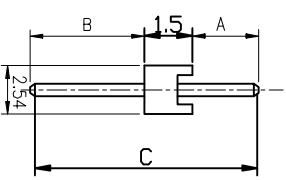
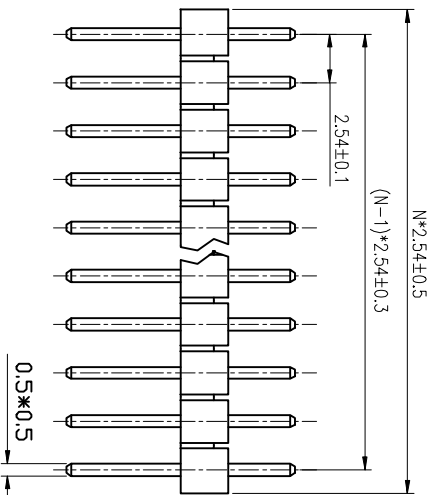


REV.	DESCRIPTION	DRAWN	CHECKED	APPROVED
A	NEW RELEASE	ZQJ 11/18/2014	~	ZQJ 11/18/2014
B	ADD P/N CODE	CJJ 11/18/2014	~	

SINGLE ROW
 N:NUMBER OF CONTACTS
 A/B:CUSTOMER LENGTH AVAILABLE



- NOTES:
- ELECTRICAL CHARACTERISTICS:
 - CONTACT RESISTANCE: 20mΩ Max.
 - DIELECTRIC WITHSTANDING VOLTAGE: 500V AC(rms) FOR 1 MINUTE.
 - INSULATION RESISTANCE: 1000MΩ Min.
 - ENVIRONMENT CHARACTERISTICS:
 - TEMPERATURE: -40°C~+105°C.

ITEM	PART NAME	PART NO.	MATERIALS	FINISHED	DRAWING NO.
1	HOUSING	2	THERMOPLASTIC	UL 94 V-0	SCALE
2	CONTACT	2	COPPER ALLOY	GOLD OR TIN PLATED	DRAWING TYPE

GENERAL TOLERANCE	ANGLE TOLERANCE
X ±0.60	X ±5°
X ±0.38	X ±3°
XX ±0.25	XX ±2°

PROJECTION	TITLE
UNITS mm	2.6mm 144Pin Header S/T Type
SHEET SIZE A4	B=1.6mm 0.6mm Square Pin
	SERIES LL1009-1D

慈溪蓝翎电子有限公司
 CIXI LANLING ELECTRONICS CO., LTD.