

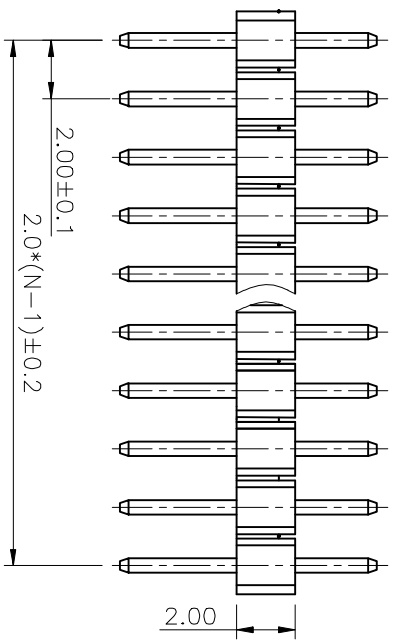
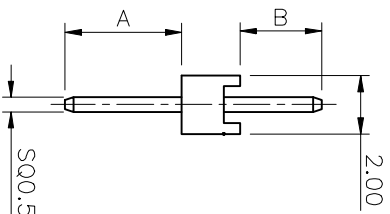
REV.	DESCRIPTION	DRAWN	CHECKED	APPROVED
A	NEW RELEASE	ZQJ 11/18/2014	~	ZQJ 11/18/2014
B	ADD P/N CODE	CJJ 11/18/2014	~	

NOTES:

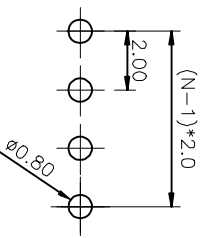
- MATERIAL&FINISHES
- INSULATOR:THERMOPLASTIC(UL 94V-0).
- CONTACT MATERIAL: COPPER ALLOY.

2. SPECIFICATION

- CURRENT RATING:1.5 Amp.
- INSULATION RESISTANCE:1000MΩ Min.
- DIELECTRIC WITHSTANDING:600VAC.
- CONTACT RESISTANCE:20mΩ Max.
- OPERATING TEMPERATURE:-40°C TO +105°C.



N:NUMBER OF CONTACTS



RECOMMENDED PCB LAYOUT  
(TOLERANCE=±0.05)

TYPE	DIM A	DIM B
1	4.00	2.80
2	6.00	3.00
3	2.80	10.20
4	2.80	15.20
5	7.00	3.00
6	10.20	2.80
7	3.70	3.00
8		

GENERAL TOLERANCE	ANGLE TOLERANCE
X. ±0.60	X. ±5°
X ±0.38	X ±3°
.XX ±0.25	.XX ±2°

DRAWING TYPE	CUSTOMER	SHEET	1 OF 1
SCALE	1:1		
DRAWING NO.			

PROJECTION	TITLE
UNITS mm	2.0mm PIN HEADER
SHEET SIZE A4	SINGLE ROW STRAIGHT TYPE
SERIES LL1011-1	

慈溪蓝翎电子有限公司  
CIXI LANLING ELECTRONICS CO., LTD.

