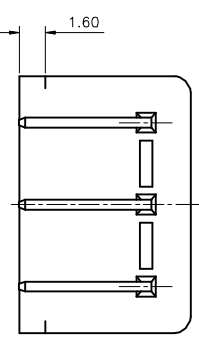
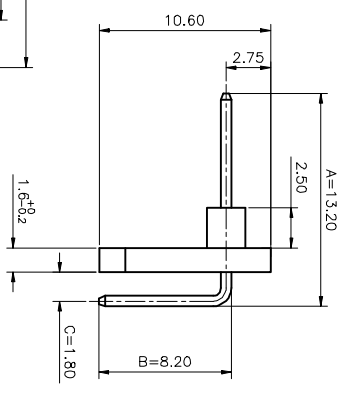
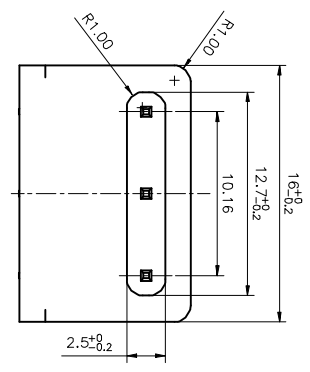
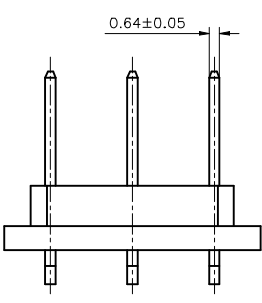
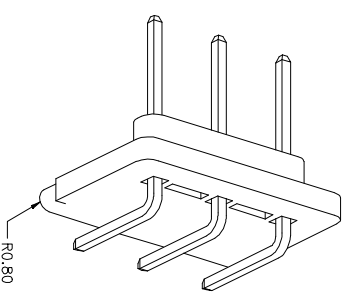
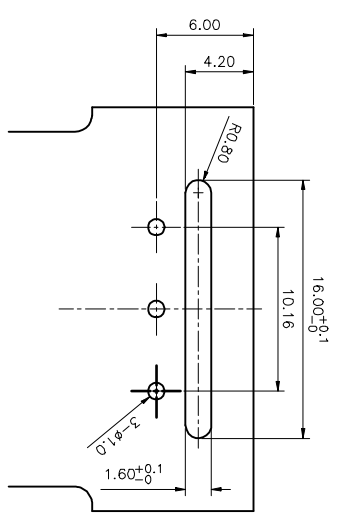


REV.	DESCRIPTION	DRAWN	CHECKED	APPROVED
A	NEW RELEASE	ZQJ 11/18/2014	~	ZQJ 11/18/2014
B	ADD P/N CODE	CJJ 11/18/2014	~	

- NOTES:**
- MATERIALS**
 - CONTACT MATERIAL: COPPER ALLOY.
 - INSULATOR: PA-46
 - SPECIFICATIONS**
 - CURRENT RATING: 3A.
 - OPERATING TEMPERATURE: -40°C TO +105°C.
 - INSULATION RESISTANCE: 1000MΩ MIN.
 - CONTACT RESISTANCE: 30mΩ MAX.
 - DIELECTRIC WITHSTANDING: 500 VAC.



TYPE	DIM A	DIM B	DIM C
1	13.20	8.20	1.80



RECOMMEND P.C.B BOARD HOLE LAYOUT
TOLERANCE=±0.05

GENERAL TOLERANCE		ANGLE TOLERANCE		PROJECTION		TITLE	
X	±0.60	X	±5°	mm	mm	PIN HEADER PITCH 5.08mm	
X	±0.38	X	±3°	SHEET SIZE	A4	SPECIAL R/A TYPE	
.XX	±0.25	.XX	±2°			SERIES LL1013-6A	
DRAWING TYPE CUSTOMER				SCALE 1:1 SHEET 1 OF 1			
DRAWING NO.				DRAWING NO.			

慈溪蓝翎电子有限公司
CIXI LANLING ELECTRONICS CO., LTD.

