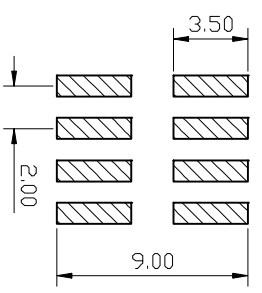
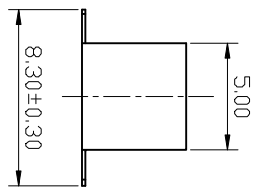
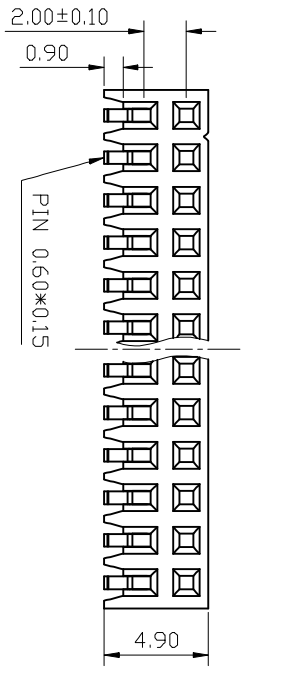
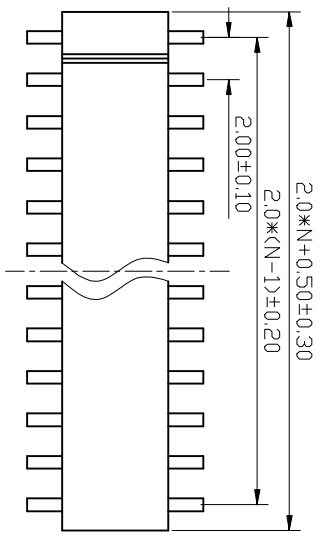


| REV | DESCRIPTION | DRAWN | CHECKED | APPROVED |
|-----|--------------|----------------|---------|----------------|
| A | NEW RELEASE | ZQJ 11/18/2014 | ~ | ZQJ 11/18/2014 |
| B | ADD P/N CODE | CJJ 11/18/2014 | ~ | |

N: NUMBER OF CONTACTS/2



RECOMMAND PCB LAYOUT
(TOLERANCE=±0.05)

NOTES:

- ELECTRICAL CHARACTERISTICS:
 - CONTACT RESISTANCE: 20mΩ Max. INITIAL.
 - DIELECTRIC WITHSTANDING VOLTAGE: 500V AC(rms) FOR 1 MINUTE.
 - INSULATION RESISTANCE: 1000MΩ Min.
- ENVIRONMENT CHARACTERISTICS:
 - TEMPERATURE: -40°C~+105°C.

| GENERAL TOLERANCE | | ANGLE TOLERANCE | |
|-------------------|----------|-----------------|--------|
| X, ±0.80 | X, ±5° | X, ±5° | |
| .X, ±0.38 | X, ±5° | .X, ±5° | |
| .XX, ±0.25 | .XX, ±2° | .XX, ±2° | |
| DRAWING TYPE | CUSTOMER | SHEET | 1 OF 1 |
| SCALE | 1:1 | | |
| DRAWING NO. | | | |

| PROJECTION | TITLE | SIDE ENTRY S.M.T |
|----------------|-------------------|------------------|
| UNITS: mm | | |
| SHEET SIZE: A4 | SERIES: LL1017-10 | |

慈溪蓝翎电子有限公司
CIXI LANLING ELECTRONICS CO., LTD.

