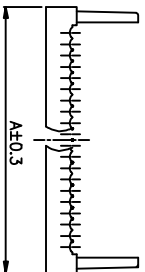
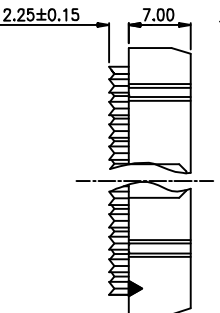
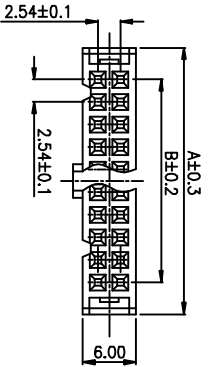
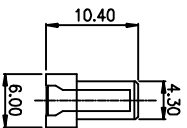
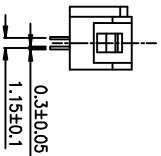
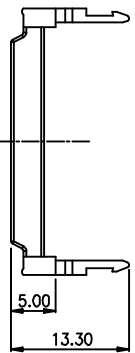


HOUSING WITH CONTACT



TOP COVER



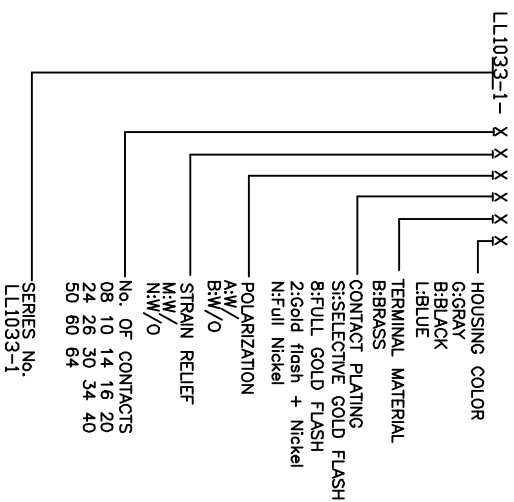
Position	Dimension	
	A	B
08	14.82	7.62
10	17.36	10.16
14	22.44	15.24
16	24.98	17.78
20	30.06	22.86
24	35.14	27.94
26	37.68	30.48
30	42.76	35.56
34	47.84	40.64
40	55.46	48.26
50	68.16	60.96
60	80.86	73.66
64	85.94	78.74

REV.	DESCRIPTION	DRAWN	CHECKED	APPROVED
A	NEW RELEASE	CJJ 11/18/2014		

NOTES:

- ELECTRICAL CHARACTERISTICS:
  - CONTACT RESISTANCE: 20mΩ Max. INITIAL.
  - DIELECTRIC WITHSTANDING VOLTAGE: 500V AC(rms) FOR 1 MINUTE.
  - INSULATION RESISTANCE: 1000MΩ Min.
- ENVIRONMENT CHARACTERISTICS:
  - TEMPERATURE: -40°C~+105°C.

3. PRODUCT NUMBER CODE:



GENERAL TOLERANCE	ANGLE TOLERANCE
X, ±0.60	X, ±5°
.X, ±0.38	.X, ±3°
.XX, ±0.25	.XX, ±2°

DRAWING TYPE	CUSTOMER
SCALE	1:1
DRAWING NO.	SHEET
	1 OF 1

PROJECTION	TITLE
UNITS	IDC SOCKET PITCH 2.54mm
SHEET SIZE	A4
SHEET SIZE	SERIES
	L11033-1

慈溪蓝翎电子有限公司  
CIXI LANLING ELECTRONICS CO., LTD.