

REV.	DESCRIPTION	DRAWN	CHECKED	APPROVED
A	NEW RELEASE	ZQJ 11/18/2014		

- NOTES:
- MATERIAL
 - INSULATOR: THERMOPLASTIC (UL 94V-0).
 - CONTACT: COPPER ALLOY.

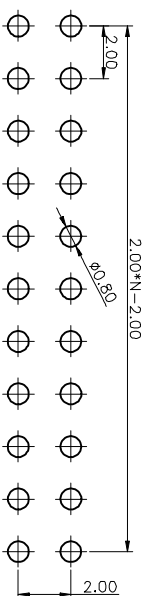
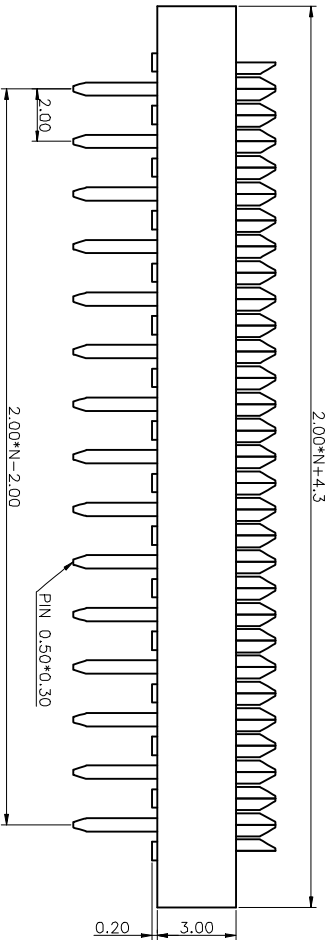
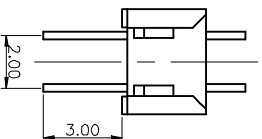
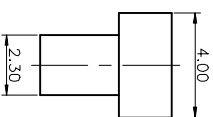
2. SPECIFICATION

- INSULATION RESISTANCE: 1000MΩ min.
- DIELECTRIC WITHSTANDING VOLTAGE: AC 500V PER MINUTE.

3. PRODUCT NUMBER CODE:

LL1036-1 - X X X X

- X CONTACT PLATING
- X FULL GOLD FLASH
- X TIN
- 2: NICKEL+GOLD FLASH
- Housing Color
- B: Black
- No. OF CONTACTS
- 04~80



RECOMMEND PCB LAYOUT(TOLERANCE=±0.05)

GENERAL TOLERANCE		ANGLE TOLERANCE		PROJECTION		TITLE	
X	±0.60	X	±5°	UNITS	mm	DIP PLUG CONNECTOR PITCH 2.00mm	
.X	±0.38	X	±3°	SHEET SIZE	A4	SERIES	LL1036-1
.XX	±0.25	.XX	±2°				
DRAWING TYPE	CUSTOMER						
SCALE	1:1	SHEET	1 OF 1				
DRAWING NO.							

慈溪蓝翎电子有限公司
CIXI LANLING ELECTRONICS CO., LTD.