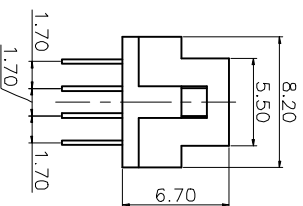
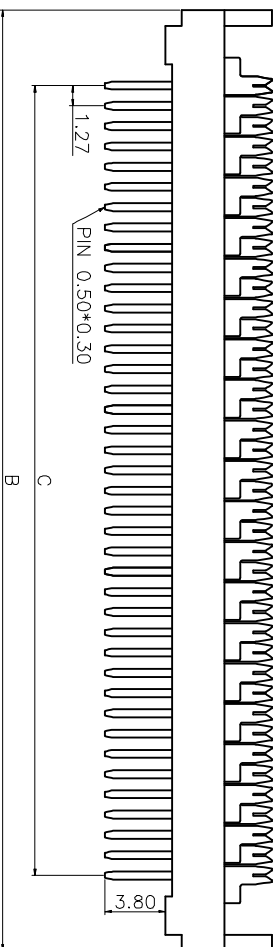
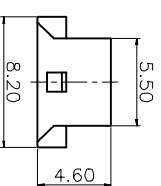
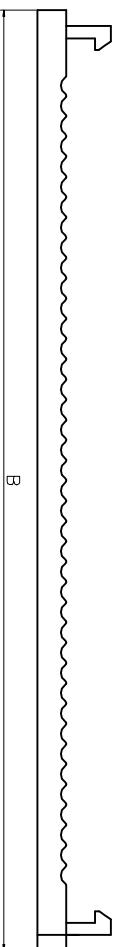
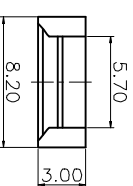
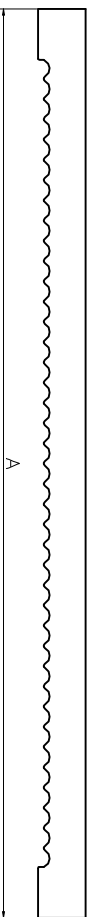


REV.	DESCRIPTION	DRAWN	CHECKED	APPROVED
A	NEW RELEASE	ZQJ 11/18/2014		



NOTES:
 1. MATERIAL
 1.1 INSULATOR:THERMOPLASTIC(U L 94V-0).
 1.2 CONTACT: COPPER ALLOY.

2. SPECIFICATION
 2.1 TEMPERATURE RANGE:-40~+105°C.
 2.2 CONTACT RESISTANCE:30mΩ max.
 2.3 INSULATION RESISTANCE:1000MΩ min.
 2.4 DIELECTRIC WITHSTANDING VOLTAGE:AC 500V
 PER MINUTE.

3. PRODUCT NUMBER CODE:
LL1036-3 - X X X X

CONTACT PLATING
 0: SELECTIVE GOLD FLASH
 8: FULL GOLD FLASH
 6: TIN
 2: NICKEL+GOLD FLASH
 Housing Color
 B: Black
 W: White
 No. OF CONTACTS
 68 80

Pos.	68	80
Dim.	49.2	57.0
A	51.2	59.0
B	41.91	49.53

GENERAL TOLERANCE ANGLE TOLERANCE

X.	±0.60	X.	±5°
.X	±0.38	.X	±3°
.XX	±0.25	.XX	±2°

DRAWING TYPE CUSTOMER

SCALE	1:1	SHEET	1 OF 1
-------	-----	-------	--------

DRAWING NO.

PROJECTION

UNITS

SHEET SIZE

A4

TITLE

DIP PLUG CONNECTOR PITCH 1.27*2.54mm

SERIES LL1036-3



慈溪蓝翎电子有限公司
 CIXI LANLING ELECTRONICS CO., LTD.