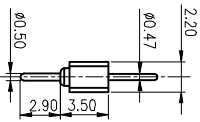
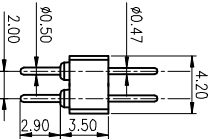
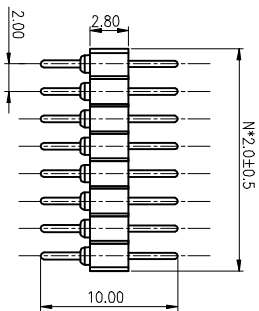


REV	DESCRIPTION	DRAWN	CHECKED	APPROVED
A	NEW RELEASE	ZQJ 11/18/2014		
B	ADD P/N CODE	CJJ 11/18/2014		

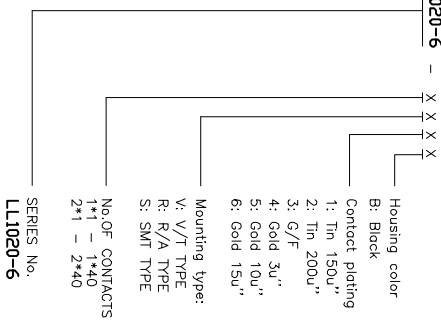
NOTES:

- ELECTRICAL CHARACTERISTICS:
 - CONTACT RESISTANCE: 20mΩ Max.
 - DIELECTRIC WITHSTANDING VOLTAGE: 500V AC(rms) FOR 1 MINUTE.
 - INSULATION RESISTANCE: 1000MΩ Min.
- ENVIRONMENT CHARACTERISTICS:
 - TEMPERATURE: -40°C~+105°C.
- PRODUCT NUMBER CODE:

LL1020-6 - X X X X X



V/T TYPE



SERIES No.
LL1020-6

GENERAL TOLERANCE		ANGLE TOLERANCE		PROJECTION	
X	±0.60	X	±5°	UNITS	mm
X	±0.38	X	±3°	SHEET SIZE	A4
XX	±0.25	XX	±2°	TITLE	DIP & SMT STRIPS ADAPTOR PITCH 2.00mm
DRAWING TYPE		CUSTOMER		SERIES	
SCALE		1:1		LL1020-6	
DRAWING NO.		SHEET		CITIXI LANLING ELECTRONICS CO., LTD.	
4		10F1		慈溪蓝翎电子有限公司	

