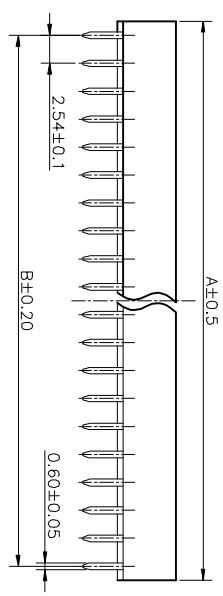
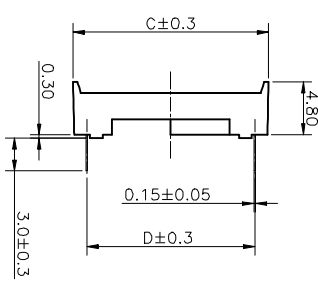
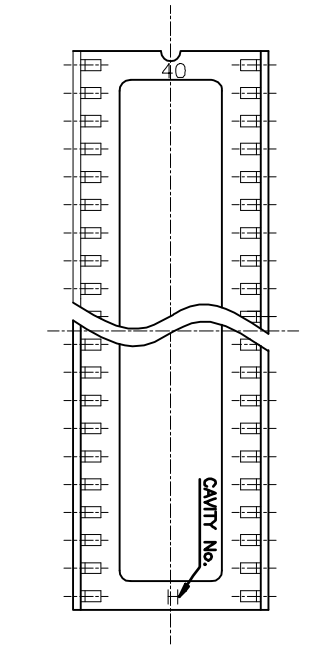


REV.	DESCRIPTION	DRAWN	CHECKED	APPROVED
A	NEW RELEASE	ZQJ 11/18/2014	~	ZQJ 11/18/2014
B	ADD W/ Kink Figure	CJJ 11/18/2014	~	CJJ 11/18/2014
C	ADD P/N Code	CJJ 11/18/2014		

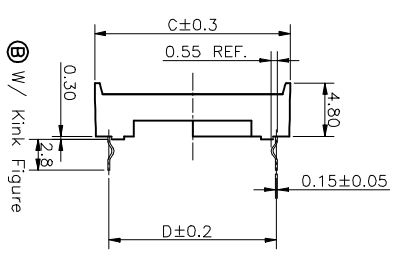


Position	Dimension			
	A	B	C	D
06	<b>7.62</b>	<b>5.08</b>	<b>10.16</b>	<b>7.62</b>
08	<b>10.16</b>	<b>7.62</b>	<b>10.16</b>	<b>7.62</b>
14	17.78	15.24	10.16	7.62
16	20.32	17.78	10.16	7.62
18	22.86	20.32	10.16	7.62
20	25.40	22.86	10.16	7.62
24	30.48	27.94	10.16	7.62
24	30.48	27.94	17.78	15.24
28	35.56	33.02	10.16	7.62
28	<b>35.56</b>	<b>33.02</b>	<b>17.78</b>	<b>15.24</b>
32	40.64	38.10	17.78	15.24
40	50.80	48.26	17.78	15.24
42	53.34	51.00	17.78	15.24

- NOTES:
- ELECTRICAL CHARACTERISTICS:
    - CONTACT RESISTANCE: 20mΩ Max
    - DIELECTRIC WITHSTANDING VOLTAGE: 500V AC(rms)
    - FOR 1 MINUTE.
    - INSULATION RESISTANCE: 1000MΩ Min.
  - ENVIRONMENT CHARACTERISTICS:
    - TEMPERATURE: -20°C~+105°C.
  - PRODUCT NUMBER CODE:
 

LL1027 - X X X X X X - X X X X

- ① Packing Type(Box):
  - 2: 2 inner box/outer box
  - 4: 4 inner box/outer box
  - 6: 6 inner box/outer box
- ② Product Packing Type:
  - A: Tube + Plastic Nail
  - B: Tube + Rubber
  - C: Foam Board
- ③ Housing Material:
  - 0: PBT UL94 V-0
  - 2: PBT UL94 HB
- Central support
  - S: W/ central support
  - X: W/O central support
- Width(DIM D)
  - N: 7.62mm(06~28p)
  - W: 15.24mm(24~482p)
- Contact plating
  - Tt: Tin
- Contact type
  - A: W/O kink
  - B: W/ kink
- No.OF CONTACTS
  - 06 08 14 16 18 20
  - 24 28 32 40 42



GENERAL TOLERANCE	ANGLE TOLERANCE
X, ±0.60	X, ±5°
X, ±0.38	X, ±3°
.XX, ±0.25	.XX, ±2°

DRAWING TYPE	CUSTOMER SHEET
SCALE 1:1	SHEET 10F1

PROJECTION UNITS	TITLE
mm	2.54mm IC SOCKET Stamping Type

SHEET SIZE	SERIES
A4	LL1027

慈溪蓝翎电子有限公司  
CIXI LANLING ELECTRONICS CO., LTD.