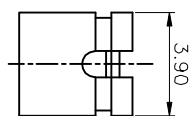
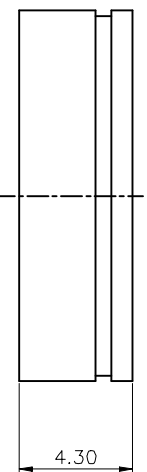
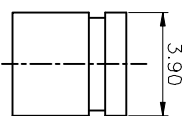
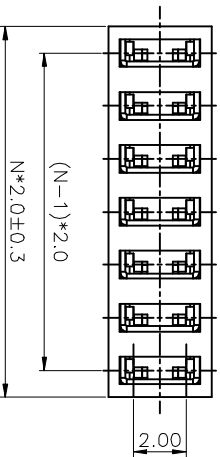


REV.	DESCRIPTION	DRAWN	CHECKED	APPROVED
A	NEW RELEASE	ZQJ 11/18/2014		
B	ADD P/N CODE	CJJ 11/18/2014		

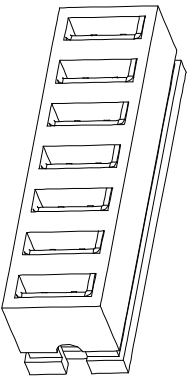


OPEN TYPE



CLOSE TYPE

N=Number of Ports

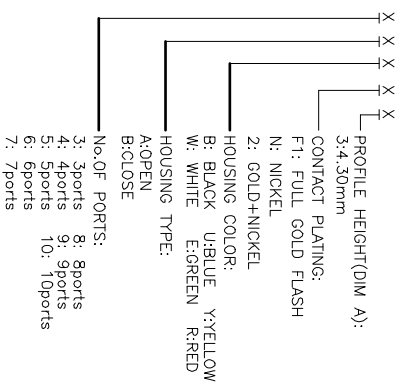


NOTES:

- SPECIFICATION:
 - CONTACT RESISTANCE: 30mΩ MAX.
 - DIELECTRIC WITHSTANDING VOLTAGE: 250V AC(rms) FOR 1 MINUTE.
 - INSULATION RESISTANCE: 500MΩ Min.
 - OPERATING TEMPERATURE: -40°C~+105°C.

2. PRODUCT NUMBER CODE:

LL1044-2E



GENERAL TOLERANCE	ANGLE TOLERANCE	PROJECTION	TITLE
X, ±0.60	X, ±5°	UNITS	2.0mm MINI JUMPER CONTINUUM
.X, ±0.38	.X, ±3°	SHEET SIZE	LL1044-2E
.XX, ±0.25	.XX, ±2'	SHEET	
DRAWING TYPE CUSTOMER		SHEET	
SCALE		1 OF 1	
DRAWING NO. C-DS1028-01-XXXXX			

慈溪蓝翎电子有限公司
 CIXI LANLING ELECTRONICS CO., LTD.
 慈 禧 电 子
 Tel: 86-574-88510936 Fax: 86-574-88510700